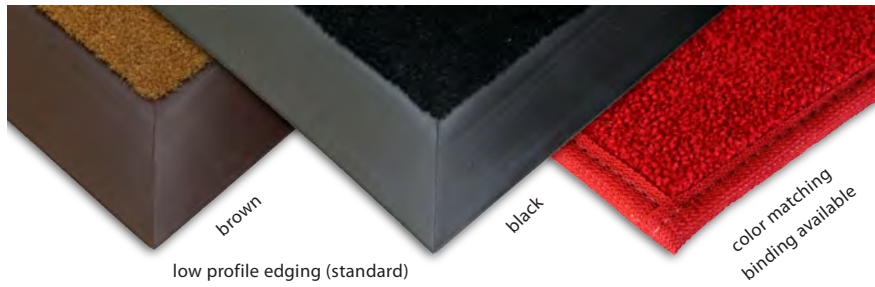


Next Step Flooring Solutions – Base & Logo Colors



low profile edging (standard)

base & logo colors

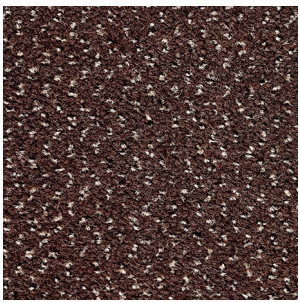
These are the most common colors. A catalog of 150 colors are available. PDF's of these are available upon request. Pin Dot patterns are also available. sd* indicates solution dyed carpet.



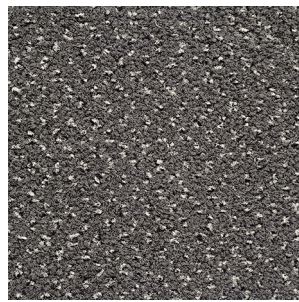
product specifications

graphic method:	inlaid and flat carved	
construction:	cut pile	
backing:	non skid backing	
edging:	<ul style="list-style-type: none"> • low profile vinyl edging (standard) • bound • serged 	
fiber weight:	38 oz. yd ²	1,077- g/m ²
total weight:	93 oz. yd ²	1,928 g/m ²
thickness:	3/8 in	10 mm
face fiber:	nylon	
testing:	passes- DOCFPI-70 pill test class 2- floor radiant panel test (astm e 648)	
durability:	●●●●●●●●●●●●●●	
warranty:	1 year	
custom sizes:	width- minimum 1', maximum 12' length- minimum 1', maximum 80'	

sd* indicates solution dyed nylon carpet



Builders-4704



Century-4505



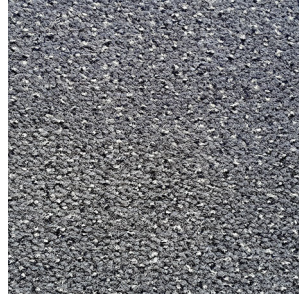
Creators-4308



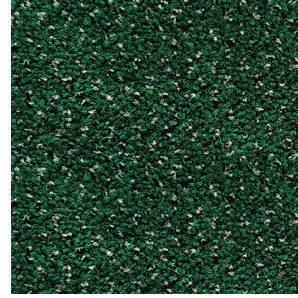
Cultural-4702



Doers-4199



Era-4599



Garland-3303



Gen Next- 4398



Gen We-4599



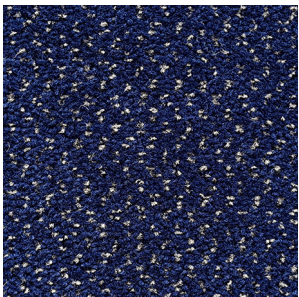
GenX-4504



GenY-4103



Golden Age-4299



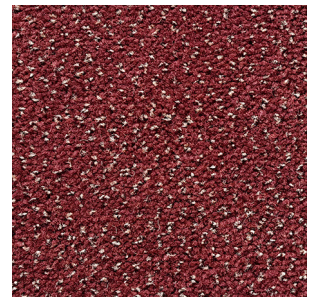
Legacy-4412



Millenial-4506



Polar-3498



Radicchio-4097